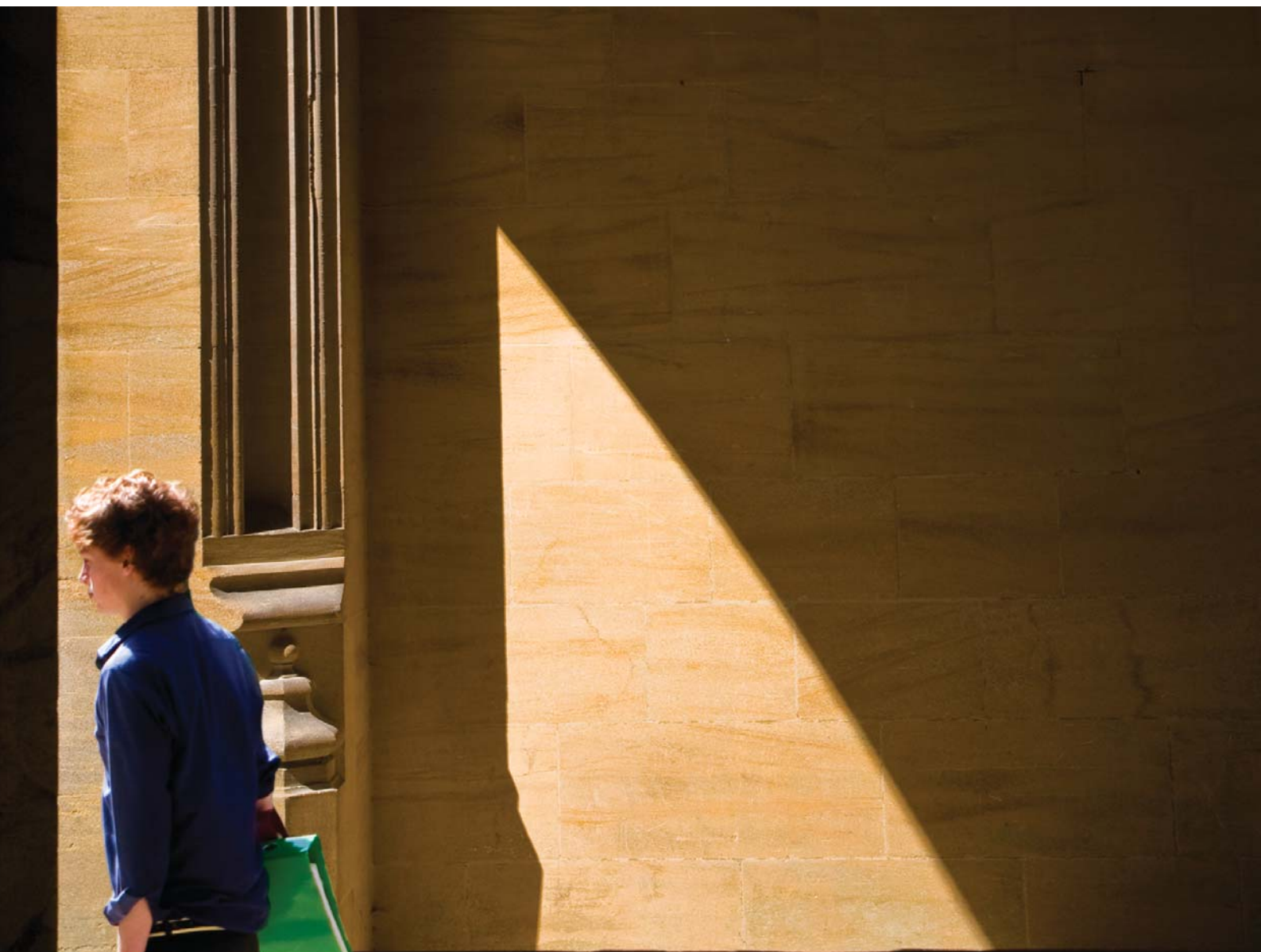


SHERBORNE

# SHERBORNE FOUNDATION

2008 ANNUAL REPORT



## MESSAGE FROM THE HEAD OF THE FOUNDATION



Welcome to this year's Annual Report from the Foundation. The format is slightly different to that of previous years, as this year most of our efforts have been channelled into raising funds for the new Music School. Therefore, our Report outlines the ways you have helped us to enhance the lives of the boys at Sherborne over the last ten years.

Your help this past decade has augmented the education of many boys at Sherborne and, although the raw figures opposite reflect good news in themselves, I hope that the profiles in the following pages give an even better reflection of your support and the real impact of your gifts.

We also outline our current priority, fundraising for the Music School, which continues apace and which we hope you will feel able to support. The most recent design of the project is included here.

You will also notice a new look to this magazine as we mirror the change the School is making to its marketing and communications to show an increasingly confident and clear image of Sherborne to the outside world; uncovering our jewel in Dorset.

Finally, like all good fundraising operations, we must look to the future. In the coming year we hope to bring you some adventurous projects relating to both bursaries and sport. More of this at a later date . . .

Please enjoy this magazine which reflects the impact you as supporters - both as donors and volunteers - have had on life at Sherborne.

A handwritten signature in blue ink, reading "Adrian Ballard". The signature is fluid and cursive, with a large loop at the end of the last name.

ADRIAN BALLARD  
Head of the Foundation

## RESULTS

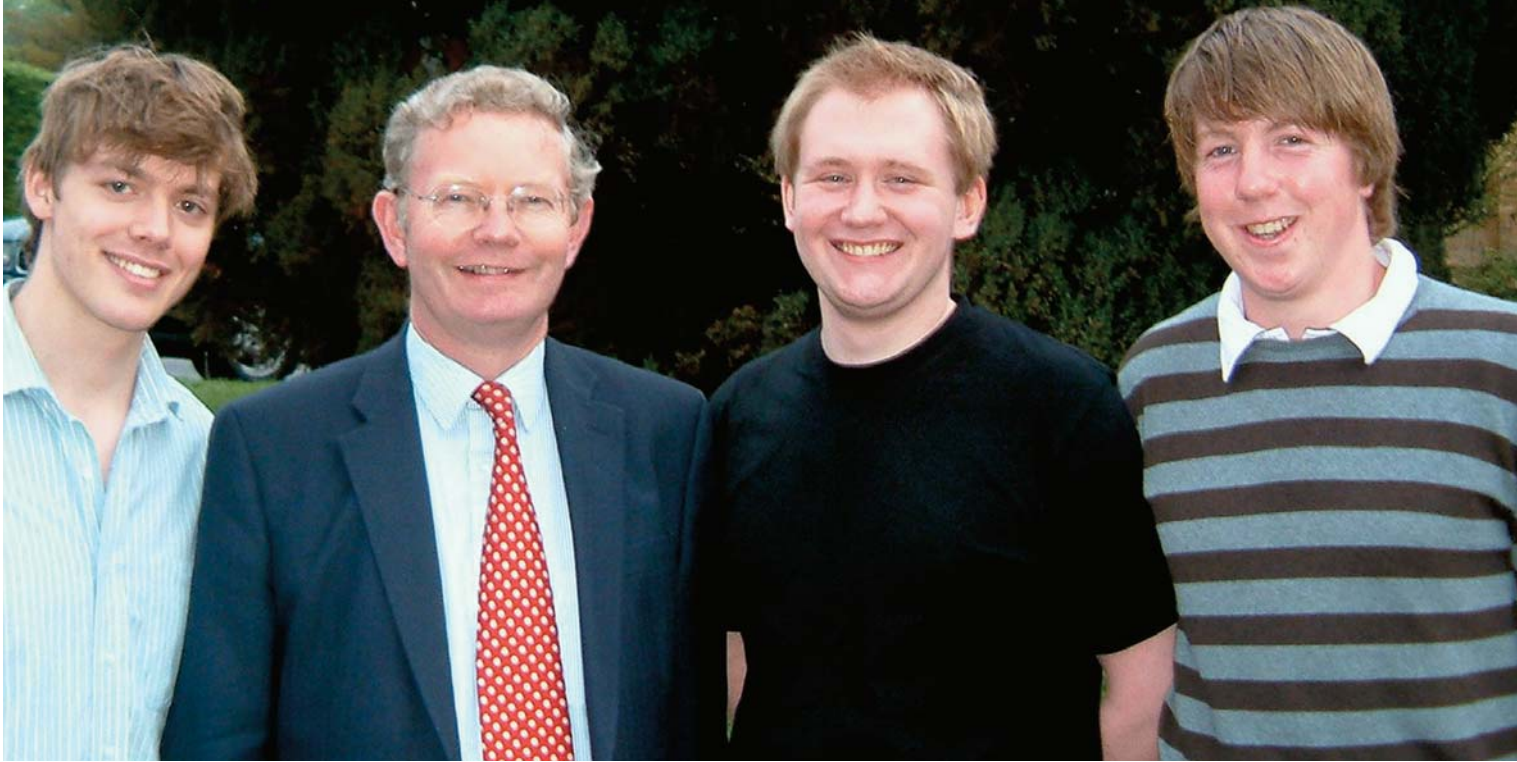
TOTAL RAISED OVER 10 YEARS	£5,042,996
TOTAL RAISED 2007/8 (PRE-AUDIT)	£710,787
Second highest year for donations since 1998	
OS WHO HAVE GIVEN TO THE FOUNDATION SINCE 1998	1,843
PARENT DONOR PARTICIPATION IN 2007/8	up 200% on 2006/7
BOW SOCIETY MEMBERS	119
Over £6m pledged in total	

### PERCENTAGE OF OLD SHIRBURNIANS BY HOUSE WHO HAVE GIVEN TO THE FOUNDATION SINCE 1998

<u>House</u>	<u>%</u>
School	23
Westcott	22
Lyon	22
Abbey	21
Harper	19
The Green	18
Abbeylands	16
The Digby	13
Wallace	7

### TOP FIVE CLASSES OF OLD SHIRBURNIANS WHO HAVE GIVEN TO THE FOUNDATION IN 2007/8

<u>Leaving Year</u>	<u>%</u>
1956	11
1962 and 1949	10
1951	9
1955 and 1965	8
1958	7



## BURSARY SUPPORT

David Kirk (a, 2005), Oliver Cooper (g, 2007) and Adam Ferris (d, 2008) have been fortunate to have been three of the six recipients of bursary support provided jointly through the School and the Foundation. They have each kindly agreed to be profiled here and represent three very different experiences of Sherborne and how it has helped them:

**David Kirk** left Sherborne in 2005 and is currently an undergraduate reading Human Biology at Birmingham University. Many of you may remember he was featured in our magazine in 2006, shortly after he had left the School. He achieved many successes at Sherborne, including receiving the Bow Award for pastoral care, being appointed Head of House and representing the School on many occasions – on the Fives courts, the rugby pitch and fundraising on Dartmoor. He was a senior NCO in the CCF Army Section. While at University, he has developed a great interest in rowing, and competed for the University as stroke for the Development Squad 1st VIII, as well as being an active member in the University Officer Training Corps. He recently returned to Sherborne to represent Birmingham University at the School's Careers Convention.

**Oliver (Oli) Cooper** came to Sherborne in 2002 joining Lyon as a quiet young boy who took time to settle, but found a niche within the School that suited his talents. Oli enjoyed sport and study but found his greatest interest was in the technical side of theatrical production. For his entire time at Sherborne he worked in the Powell Theatre and Big

School Room on countless productions from big musicals to small art house plays. This interest has now taken him to the Central School of Speech and Drama where he is well into his degree in the subject and is often found in theatres around London practising his craft. Oli was also an important mainstay of House life in Lyon winning the Tim Dicken Cup for pastoral care (voted for by the boys) twice – a rare feat.

**Adam Ferris** left Sherborne this summer after five distinguished years in Harper House where he achieved a great deal in the sporting, academic and cultural aspects of Sherborne life. In a competitive field, Adam won the Owl Scholarship and Bursary. Adam is a classic Shirburnian who has achieved on many fronts, from taking part in House plays to playing rugby and cricket to a high standard and performing well academically.

We are sure you will agree that these three boys are a great endorsement for Sherborne, and their education was in part possible because of your support for our bursary programme, through donations and legacies, that has now been up and running for ten years.



Right: Tom Badham-Thornhill

## OTHER BURSARY SUPPORT

### Travel and Tour Bursary Fund

The Foundation has also been able to support boys through the Travel and Tour Bursary Fund. This helps boys who are on bursaries and scholarships to attend overseas academic, cultural and sporting trips that are useful for their development and that they would not otherwise be able to afford. So far, over a dozen boys have been on a variety of trips thanks to the generosity of donors to this fund. Charlie Esson (b, 2007) is one of a recent crop of good cricketers from Sherborne and is a great example of how it has worked so well:

When a tour to South Africa was planned and he was asked to captain the side, he wanted to go. At the time, the Travel and Tour Bursary Fund was newly created and he applied for support and received it. Since going on that tour and gaining the experience, he has captained the Sherborne side to one of its most successful seasons ever. While in South Africa, he was offered the opportunity to play a season for Western Province sponsored by a local OS; he took this up with great relish having saved for it in his final year. Since then, Charlie's cricket has

gone from strength to strength and this summer he scored back-to-back centuries for the Sherborne Pilgrims in the Cricketer Cup.

### Andrew Yorke Sail Training Fund

Also in 2005, we were asked by the Old Shirburnian Sailing Society to support a sailing bursary for boys to learn to become instructors and race sailors. This bursary was created after learning of the untimely death of Andrew Yorke, who was a great supporter of our work. Over a dozen boys have received this award and gone on to help with teaching the School sailing team. Tom Badham-Thornhill (f, 2007) was one recipient who described his experience and what it gave him:

*'I was lucky enough to benefit from the Andrew Yorke Sail Training Fund in 2006 enabling me to do the Powerboat 2, First Aid and Instructors courses, and put something back into Sailing at Sherborne.*

*Since I became an Instructor I have been coaching other boys at the School and helping young talent to fulfil their true potential. I have found it immensely rewarding.'*



Hughie Holmes All Weather Pitch

## ADDITIONAL FACILITIES

The Foundation has also helped the boys in more tangible ways as described by some of the boys who have recently benefited from our projects:

### **The Upper Pavilion and re-laying of the Upper Square**

Robin Irving (d, 2008), Captain of Cricket 2008:

'It is a distinct improvement on the Pavilion as it was before, keeping the same character but with bigger, modern changing and bathroom facilities, a modern kitchen, great dining space, a new electronic scoreboard and a good view of the game. The new cricket strips offer a greater bounce to our wickets that we have not known for many years.'



The Upper

### **The Safety Boat for the Sailing Society**

Gordon Whitley (e, 2008), keen sailor who has sailed with Dame Ellen MacArthur:

'It is great to know when you are sailing that you have the safety Rib ready at hand. I have been fortunate not to have needed it but have seen others saved from peril by it.'



Gordon Whitley

### **The Hughie Holmes All Weather Pitch**

Kit Regan (b, 2008), top hockey player:

'The Hughie Holmes pitch is the best playing surface we play on all season and is perfect for a great game of hockey.'



Edward Knudsen

### **The six kayaks bought for the Canoe Club**

Edward Knudsen (g, 2006), former Captain of the Canoe Club:

'It was great to have the additional kayaks as they helped us gain a wider experience of white water as well as enabling us to take bigger groups out on the rivers.'



## OVER THE PAST TEN YEARS WE HAVE BEEN INVOLVED IN FUNDING FIFTY PROJECTS

A New Music School  
 Ancient History Volumes for Classics  
 Andrew Yorke Sail Training Fund  
 Art School Development  
 Artistic Residency  
 Biology Equipment  
 Boissier Bursaries  
 Boissier Wing at Lyon House  
 Bowling Machine  
 Digby Award  
 Domesday CD  
 Drama Workshop Equipment  
 Edbrooke Bursary  
 Electronic String Quartet  
 Eperson Bursary  
 Film Society Equipment  
 Fourteen Artificial Cricket Nets  
 Green House garden Basketball Equipment  
 Grounds Scarifier for Cricket  
 High Flyer Fund  
 Hughie Holmes All Weather Pitch  
 Interactive Language Teaching Suite  
 Interactive Trading Floor Software  
 Intranetting of the Houses  
 Laser Cutter for Design Technology

Library Book Searching Software  
 Maths Exploratory  
 Maths Whiteboards  
 Musical Instruments  
 Oliver Holt Art Gallery  
 Owl Bursary and Scholarship  
 Patrick Shelley Recording Studio  
 Personal Development Fund  
 Pilkington Laboratories  
 Portable Floodlights  
 Refurbishment of the Fives Courts  
 Refurbishment of the Upper Pavilion  
 Re-laying of the Upper Cricket Square  
 Rifles for CCF  
 Rock Music Equipment  
 Safety Boat for the Sailing Society  
 Six 420 Dinghies  
 Six Canoes  
 Sports Analysis Equipment  
 Starting Blocks for Athletics  
 Swing Band Tour Stands and Equipment  
 Telescope for the Astronomy Society  
 Tennis Development  
 Twelve Travel and Tour Bursaries  
 VC Plaque



## THE PRESENT AND THE FUTURE

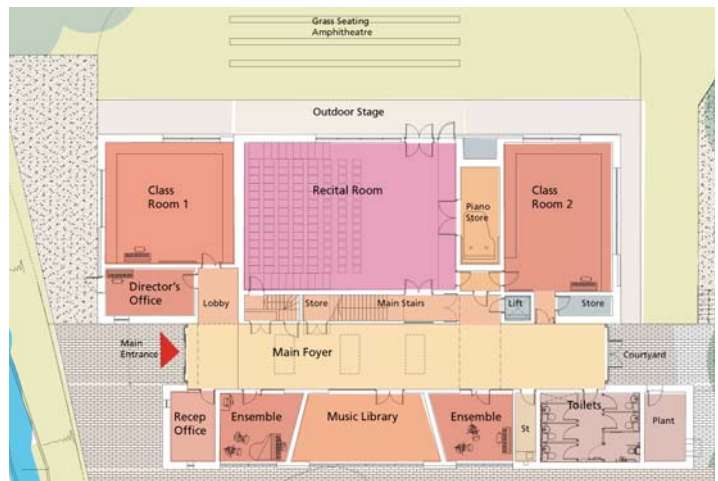
### A New Music School

Music is an important part of Sherborne life. Every Shirburnian is taught music as a core subject from the start of his School career, and more than 50% of the boys study at least one instrument, undertaking 465 music lessons per week.

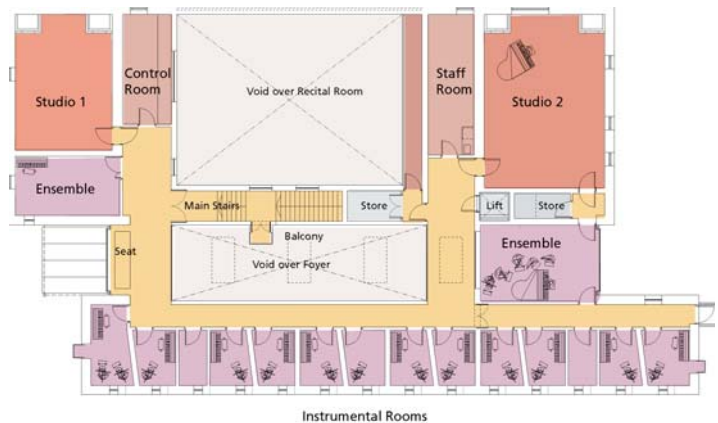
The existing accommodation was not designed for specialist music teaching, rehearsal or performance, and sound-proofing is generally poor. This means that conditions for teaching are cramped and equipment has to be moved regularly. Despite this, Sherborne has an excellent and diverse musical output. However, the department increasingly struggles to be cohesive and its growing popularity demands much more space.

The new Music School will provide a single purpose-built centre with large ensemble rooms, two fully equipped music classrooms, two recording rooms, and many individual practice rooms. Based around a 120 seat auditorium, the new building will also contain a Music Library and enough space for up to 30 boys to practise at any one time.

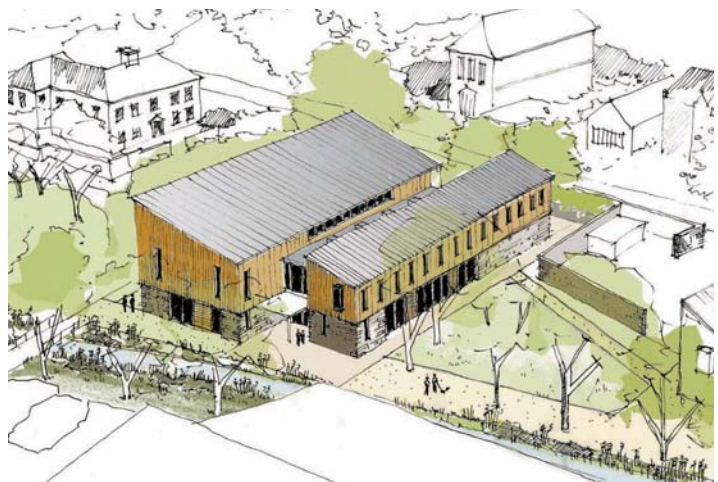
Having already secured gifts and pledges totalling £2.4m, we encourage as many OS, parents and friends of the School as possible to contribute towards the remaining £100,000 and become a part of this landmark project for Sherborne.



GROUND FLOOR



FIRST FLOOR



ARCHITECT'S IMPRESSION





**Foundation Trustees**  
 from left to right:  
 Michael Slade, Michael French,  
 Jeremy Paulson-Ellis, Maurice Thompson,  
 Randal MacDonnell, Rodney Short,  
 Charles Eglington, Guy Hudson,  
 Anthony Cassidy, John Pocock,  
 Simon Eliot (Headmaster), Simon Tindall,  
 Rory Powe, Angela Lane, Jeremy Marshall,  
 Michael Hatchard and Graeme Gilchrist

absent: Dominic Adams, Derrill Allatt,  
 Roger Fidgen, Anthony Pralle,  
 Miles Ritchie and James Ross

## WHO WE ARE AND WHAT WE DO

The Trustees of the Foundation are drawn from the OS, Parent and Past Parent bodies of Sherborne and all are donors. They are drawn from a range of age groups and industries and are the guardians of your donations as well as the Trustees of the charity. The Board was first formed in late 1998 and formally constituted in 1999. Seven Trustees and one member of staff survive on the Board from that day as shown in the photograph below. Since then the Board has seen more members become involved and has grown to its current membership of 22.

7

## THE FUTURE AND YOUR OPPORTUNITY TO BE INVOLVED

The Trustees are constantly looking to widen the group of volunteers who help in all aspects of the work of the Foundation. We currently have over 50 volunteers doing everything from signing letters and stuffing envelopes, to chairing the Board meetings and hosting events.

In the future, we are looking to expand the number of individuals involved by calling on the expertise and professional skills of even more OS, parents and friends of the School. We are creating a small number of flexible working groups over the autumn of 2008 to help enhance every area of our work including sports development, bursary fundraising and the growth of the legacy and Annual Fund programmes.

If you would like to be a member of one of these working groups and feel you have something to offer, please contact Adrian on [01935 810554](tel:01935 810554) or email [aballard@sherborne.org](mailto:aballard@sherborne.org). The groups will mostly be meeting three times a year in London.



The original Foundation Trustees  
 and Adrian Ballard, Head of the Foundation



## LONGEVITY

### The Bow Society – a lasting gift

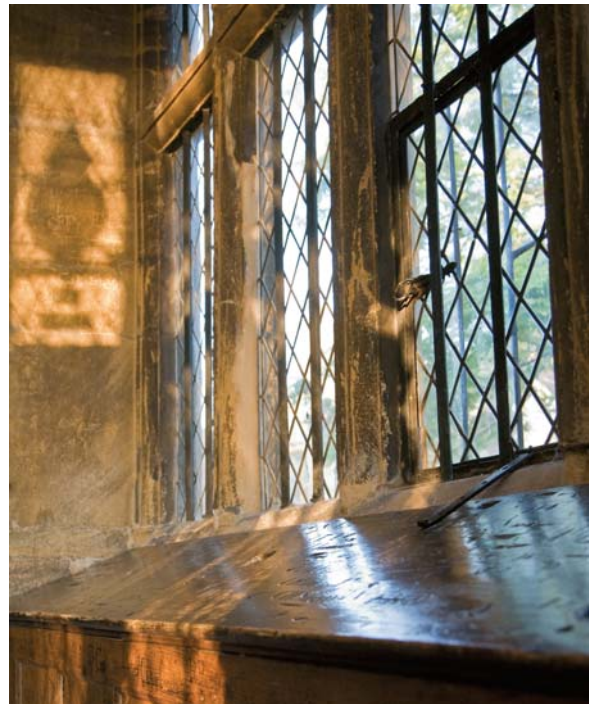
It is fitting that in the Foundation's tenth year of operation, we surpassed 100 members of the Bow Society. Members of this very special group have pledged a gift in their Will to support the future of Sherborne School.

Motivations for making a bequest vary enormously: some have fond memories of their time at Sherborne and feel they would like to give something back to the School; others are encouraged by Sherborne's current strength and direction and wish to assure its continuation. For many it is probably a combination of these factors and also the knowledge that any legacy made to the Foundation can reduce the liability for Inheritance Tax, and that the donation is one that does not affect funds during one's lifetime. The Foundation would never presume to dictate the manner or amount that an OS or friend of the School might like to give. However, as a

guide, some current Bow Society members have considered a figure of between 1-2% of their estates.

We are delighted to be able to thank those who have had the foresight of mind and generosity of spirit to include the School in their Wills through the Bow Society. This group meets twice a year, in London and Sherborne, when members are privy to an eagerly awaited update on the School from the Headmaster, and a chance to pose questions to him personally.

If you would like further information about leaving a legacy to Sherborne and joining the Bow Society, please contact Foundation Officer Stephanie Sanchez on **01935 810554** or email [ssanchez@sherborne.org](mailto:ssanchez@sherborne.org)



# OLD SHIRBURNIANS WHO HAVE GIVEN BETWEEN 1ST JULY 2007 AND 30TH JUNE 2008

A number of donors have asked to remain anonymous – all others are listed below

<b>1929</b> F B Sharp	(f)	<b>1951</b> G J P Browne	(a)	<b>1961</b> R O Irwin	(a)	<b>1975</b> M P Ripley	(b)
<b>1933</b> D S Egrement	(c)	E J Parker-Williams	(a)	R J Childs-Clarke	(b)	R E Salkeld	(c)
<b>1934</b> J E Cordingley	(c)	T J R Weakley	(a)	N P Holder	(c)	M K Jackson	(g)
<b>1936</b> G G Lilley	(a)	P F deV Carey	(b)	R H Irwin	(c)	A L Jackson	(g)
G H W Manning	(c)	C B O Davies	(b)	R B C Scott	(c)	<b>1976</b> C J L Thompson	(f)
<b>1937</b> J A S Neave	(d)	S A Wallace	(d)	J M S Kennedy	(d)	R R Montague-Jones	(g)
A R Wynter-Bee	(f)	A J M L Cromie	(b)	<b>1962</b> R K House	(a)	A J D Pralle	(g)
E V M Whiteway	(h)	R S John	(f)	M J Myers	(b)	R J Dampney	(m)
<b>1938</b> M W Lacey	(a)	R Marris	(f)	M V Ward	(b)	M N B Thompson	(m)
H G M Peto	(a)	G M Edmond	(g)	N J Allan	(c)	<b>1977</b> W S O'G Haly	(a)
P W E Kidner	(b)	B H H Longrigg	(h)	F B W James	(d)	J N H Taylor	(a)
P W M Burt	(c)	<b>1952</b> S B V Dickinson	(a)	A S Legg	(d)	A C Hunter	(h)
F A Coombe	(f)	J C D Ryder	(a)	R M Weston	(d)	<b>1978</b> R S O'G Haly	(a)
I P Todd	(f)	N H Fair	(b)	H S Dobbs	(f)	N C R Isaac	(a)
<b>1939</b> M R G Earls-Davis	(a)	S R Roche	(b)	O F Clarke	(g)	M M Ritchie	(c)
D V A Craddock	(g)	A G Clarkson	(d)	W Eglington	(g)	A L Carrington	(d)
<b>1940</b> J M W Badcock	(a)	J B Morley Cooper	(d)	J B Holloway	(d)	I L Scholte	(d)
R W B Morton	(b)	A G Lambert	(d)	Q J Jones	(g)	R J Harlow	(f)
J F Ware	(b)	P B Rea	(g)	J D Paulson-Ellis	(g)	J D W Pocock	(f)
<b>1941</b> A M Jones	(a)	B J Clarke	(h)	C H Reynolds	(g)	D N A Drew	(h)
D M A Irvine	(b)	<b>1953</b> J M C Garrod	(b)	A G Douglas	(h)	<b>1979</b> G F T Watts	(b)
R W Gaskell	(d)	M H Bryan-Brown	(f)	<b>1963</b> N F Martin	(a)	<b>1980</b> N A Lambie	(b)
D E Hill-Smith	(g)	G E Gilchrist	(a)	M H Thomas	(a)	D P Adams	(f)
<b>1942</b> G C Parson	(a)	P L Southcombe	(f)	T D Shorland Ball	(b)	J C Floyer	(h)
D K Freeth	(b)	J A Paine	(g)	P A J Cordingley	(c)	G A Hudson	(m)
D K Bungey	(f)	A E P Collins	(h)	C B Evans	(c)	D E Lane	(m)
G L Baker	(g)	R D G Macdonald	(h)	B A F Blandford	(d)	<b>1981</b> G H Prentice	(c)
<b>1943</b> S R D Brabant-Smith	(c)	H B Smith	(h)	N D Morgan	(g)	H F Gill	(f)
T R Pearce	(f)	J A Stilgoe	(h)	I C Mackay-Dick	(h)	R S Powe	(h)
T A P Clarke	(g)	<b>1954</b> M H Dare	(a)	<b>1964</b> R J G Rycroft	(b)	<b>1982</b> M C Bennett	(d & e)
D I T Wilson	(g)	H de V Welchman	(b)	M W Brumage	(d)	A R L Bogle	(f)
<b>1944</b> S W Davies	(a)	M W T Nott	(c)	W J Morel	(d)	A T Dewhurst	(f)
W R Meadows	(a)	T L A Daunt	(d)	R N T Short	(d)	P D G Chavasse	(g)
A H Young	(c)	R P Heazell	(d)	W R Tooke	(h)	<b>1983</b> R H G Brand	(a)
R McEwan	(d)	P J T Gorle	(f)	N B Waterfall	(h)	D A J Rintoul	(c)
L G S-M Wadeson	(d)	J R E Borron	(g)	<b>1965</b> R H Bond	(a)	T W Hills	(d)
F B Ellis	(g)	<b>1955</b> J W St Maur Sheil	(b)	P A W Brodie	(a)	R A Rydon	(m)
W G Calvert	(h)	R I Woods	(b)	A M Cree	(a)	<b>1984</b> A J Small	(a)
M Stevens	(h)	R G Long	(c)	M L French	(a)	C M Ward	(b)
<b>1945</b> H D Rogers	(a)	H B Trethowan	(c)	N McN Nott	(a)	S J Trist	(d)
M J Gordon	(f)	J Lawrence	(d)	S W de M Leathes	(a & m)	D W Thorne	(h)
J R Seale	(f)	C M Peplow	(f)	M E Slade	(c)	<b>1985</b> N J Ware	(e)
R L L Davis	(g)	D W R Whicker	(f)	M J Le Fluffy	(d)	E W R Bridges	(f)
C Wickham-Jones	(g)	J C F Holman	(f)	J P Steer	(f)	J A Foster	(g)
<b>1946</b> J C Atkinson	(a)	M B Wilson	(h)	P J Fegen	(g)	G D Gould	(m)
G A Fawcett	(a)	<b>1956</b> B H Dean	(a)	D H Dowdeswell	(h & m)	<b>1986</b> P E G Chambers	(a)
A H L Lovell	(a)	R M R MacDonnell	(a)	<b>1966</b> J C Haycock	(a)	<b>1987</b> T C Mitchell	(d)
M H Blakeney	(b)	J J S Marshall	(a)	M C Norman	(a)	D J L Bridge	(g)
C R Carr	(b)	R N Spink	(a)	B J F Batting	(c)	<b>1988</b> R A Bagnall	(b)
J G S Norman	(c)	A A Cassidy	(a)	D A Haworth	(d)	<b>1989</b> D H Jones	(f)
C D Gibbon	(d)	A F N Dew	(c)	R Carey	(b)	T W H Keatinge	(h)
<b>1947</b> S W D Hall	(a)	R J Stone	(d)	J P Hargrove	(h)	<b>1990</b> W H W Allen	(c)
J Byron	(b)	C C T Henfrey	(f)	<b>1967</b> J White	(a)	D A Stein	(e)
J H Carr	(b)	R D F Allan	(g)	P A Fanning	(b)	<b>1991</b> C E Timmis	(a)
J R Carver	(c)	C R J Eglington	(g)	A C W Peck	(g)	A C R Davey	(b)
W L Hancock	(d)	R J Hodgson	(g)	J N W May	(h)	J P F Perowne	(m)
T V Prior	(d)	S P Tindall	(g)	M C Tucker	(h)	<b>1992</b> R Hands	(b)
E T Thring	(g)	C A C Field	(h)	<b>1968</b> R B Gray	(a)	T C de C Clay	(c)
<b>1948</b> D C Knechtli	(a)	G Gregory-Smith	(h)	C P Goodall	(c)	A E de Mestre	(g)
D P Monckton	(a)	R G Smithson	(h)	P T S Milln	(d)	<b>1993</b> P D R Firebrace	(a)
F G Matthews	(b)	D M Summerscale	(h)	T N Clark	(g)	J R Mead	(h)
B M Hawkes	(c)	<b>1957</b> B M Sterndale-Bennett	(a)	R J W Proctor	(g)	<b>1994</b> C G Jones	(b)
I A D Thomson	(c)	J G Woodrow	(b)	R D Wootton	(h)	C P H Grant	(c)
P E Hustwitt	(g)	E H Winthrop	(c)	<b>1969</b> R M Cartmel	(a)	J G Holland	(c)
R W Rentoul	(g)	D M Brook	(d)	P G Michelmores	(g)	W P Hargrove	(h)
<b>1949</b> J J M Glasse	(a)	R A D Fyshe	(g)	C C Hoey	(h)	<b>1997</b> D C Maxwell	(b)
D B Gosheron	(a)	P H T Harrison	(g)	<b>1970</b> A D Leakey	(b)	P D B Ryan	(f)
W E Postlethwaite	(a)	P D Taylor	(g)	<b>1971</b> T S Lovell	(a)	<b>1998</b> T P Davies	(m)
J P Oakley	(c)	J H Ross	(h)	J D G Carey	(b)	<b>1999</b> T J Beckett	(f)
J M Walker	(c)	<b>1958</b> O N Breay	(a)	C I F Russell	(b)	<b>2000</b> E S H Lang	(a)
D Roberts	(d)	N R P Dempster	(a)	T J W Barnard	(c)	<b>2007</b> C J Gilbert	(f)
J P Robertson	(f)	D J Wyatt-Smith	(b)	A H Flatt	(d)		
R A H Colquhoun	(g)	J P Irving	(d)	A T Hopkinson	(m)		
D R T Waring	(g)	R S Simpson	(d)	<b>1972</b> D V Allatt	(a)		
W S Blackshaw	(h)	J Robson	(f)	C P Andrews-Speed	(a)		
<b>1950</b> R F Eberlie	(a)	J R Killick	(g)	R J More	(f)		
R G Martin	(a)	J L Monro	(g)	<b>1973</b> R A L Leach	(b)		
M S Watts	(a)	<b>1959</b> C A H Gibson	(a)	M E Hatchard	(c)		
A H Alexander	(b)	M A Ward	(b)	S J Riley	(c)		
R R Lane	(c)	R W Beeney	(c)	J P S Burn	(h)		
H E M Barnes	(f)	J S R Arbuthnot	(d)	P J Rigby-Jones	(h)		
D P G Stables	(g)	J R Venning	(d)	D R Apperly	(m)		
		D N Morrison	(g)	<b>1974</b> R W Jackman	(a)		
		T J Nichols	(g)	S D Stephenson	(c)		
		<b>1960</b> P Furniss	(a)	A N Wear	(f)		
		T J B Farmer	(b)	J D Punter	(h)		
		T J M Horsfall	(c)				
		D A Greenwood	(d)				
		I Gavin-Brown	(g)				
		C H Collingwood	(h)				
		D C Price	(h)				

## PARENTS AND PAST PARENT DONORS

Mr and Mrs A Y Al Qatami  
Mr and Mrs M Ball  
Mr and Mrs K D Bell  
Mr and Mrs G Berkeley  
Mr and Mrs M J A Bond  
J N G Bowden  
D N Chesterfield  
Mr and Mrs Y H Chung  
Mr and Mrs Y P Chung  
Mr and Mrs Dean  
Mr and Mrs C P Dudgeon  
Mr and Mrs D J M Farris  
Mr and Mrs C B Findlay  
Mr and Mrs D A J Firebrace  
Mr and Mrs W D Gammell  
I Gardner  
Mr and Mrs N Girkins  
Mr and Mrs A Harding  
Mrs F Harvie-Clark  
Mr and Mrs R Herbert  
Mr and Mrs G E V Holmes  
Mr and Mrs R Howes  
Mr and Mrs A Irvine  
Mr and Mrs P J Jenkins  
Mrs R Jenkins  
Mr and Mrs N Kesley  
Mr and Mrs P S Lamb  
Mr and Mrs D E Lane  
Mr and Mrs M Le May  
C Lee  
Mr and Mrs S Lello  
Mr and Mrs D Lyon  
Mr and Mrs N MacDonald  
Mr and Mrs J Markham  
Mr and Mrs D McKenna  
C J Moubray  
Mr and Mrs J R Murray  
Mr and Mrs A G Onslow  
Mr and Mrs J Rigby  
Mr and Mrs R Simmons  
Mr and Mrs J G Smibert  
Mr and Mrs C J Smith  
A Stebbings  
Mr and Mrs F Tittle  
Mr and Mrs D Tong  
A Tucker  
Mr and Mrs S Tulayapornchoti  
Mr and Mrs R D Wells

## OTHER DONORS INCLUDING GOVERNORS, STAFF AND PHILANTHROPISTS

American Friends of Sherborne Inc.  
A P Ballard  
Canadian Friends of Sherborne  
Mr and Mrs S F Elliot  
R Hodder-Williams  
Mrs T E Inge  
Jemma Trust Co Ltd  
John Coates Charitable Trust  
Mrs R C Raymond  
Mrs J A C de C Ricketts  
R H W Robson  
The American Fund for Charities  
The Camilla Mountain Charitable Trust  
The Frocester Trust  
The William Gibbs Trust  
J D Ward  
M A Weston

## FOUNDATION TRUSTEES

D P Adams  
D V Allatt  
A A Cassidy  
C R J Eglinton  
R S Fidgen  
M L French  
G E Gilchrist  
M E Hatchard  
G A Hudson  
Mrs A C Lane  
R M R MacDonnell  
J J S Marshall  
J D Paulson-Ellis  
J D W Pocock  
R S Powe  
A J D Pralle  
M M Ritchie  
J H Ross  
R N T Short  
M E Slade  
M N B Thompson  
S P Tindall

## FORMER TRUSTEES

J P Hargrove  
A G C Howland Jackson  
N C Humphreys  
J N W May  
N W S Owen  
J A Paine  
I D W Robertson

## OTHER VOLUNTEERS 2007/8

D H Atkins  
P Atkins  
D J G Banks  
T J W Barnard  
D M Barry  
R H Bond  
P T Bradshaw  
E W R Bridges  
J Buckingham  
R Carey  
N P H R Chamberlin  
P A J Cordingley  
J A H Craw  
J Dams  
A M David  
J I W Davies  
P D R Firebrace  
H F Gill  
C C M Glasse  
C P Goodall  
W S O'G Haly  
R Hands  
R W J Hardie  
J E C Henderson  
C H Hildesley  
M A Hopkins  
J D Howland-Jackson  
T J Hunt  
J P Irving  
M Knowles

Mr and Mrs R T Lalonde  
P J Lawson  
R A L Leach  
G H W Manning  
J C Mason  
J R T Mayo  
N J Miller  
R J More  
M W T Nott  
D C M O'Connell  
C C J Platt  
G H Prentice  
J M C Quaile  
Mrs S Radford  
S J Riley  
J R Roberts-West  
R A Rydon  
W J Rydon  
S D Stephenson  
B M Sterndale-Bennett  
Mrs J Stirling  
J O J Stocken  
N H Taylor  
N J Ware  
Mr and Mrs J P Whiteley  
Mrs P Williams  
J R Young

And our friends in the  
OSS Office



SHERBORNE

SHERBORNE SCHOOL FOUNDATION  
ABBEY ROAD, SHERBORNE, DORSET DT9 3AP

T: 01935 810554 E: [foundation@sherborne.org](mailto:foundation@sherborne.org) [www.sherborne.org.uk](http://www.sherborne.org.uk)

REGISTERED CHARITY NO 1073522 COMPANY LTD BY GUARANTEE NO 3686309

PHOTOGRAPHY – JAY ARMSTRONG, J DEAN, C G POON, S SANCHEZ DE MUNIAIN, M F WADE

DESIGNED AND PRINTED BY SHELLEYS 01935 815364 ON 50% RECYCLED MATERIAL